

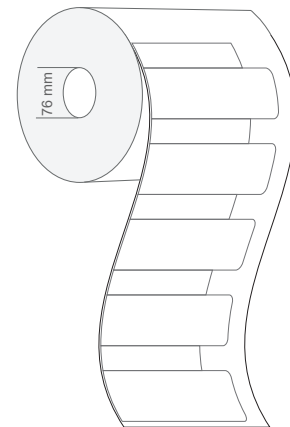


Syndicate MOM 6024 is a passive UHF RFID label for Mount on Metal applications demanding long read range in small form factor with a high performance permanent adhesive. These labels feature a film face to print private logos, product information, or scannable barcodes directly on the label and its additional flexibility for curved surfaces makes it perfect for tracking a variety of transit items.

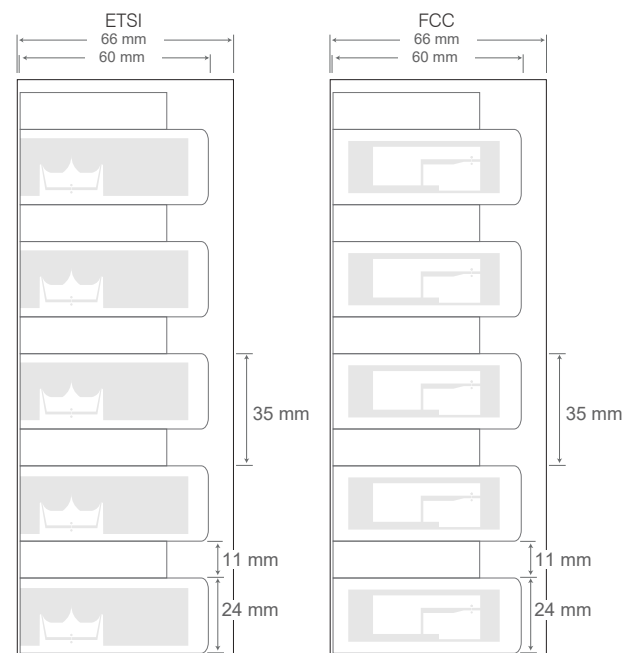
With balanced performance on metal and liquid container, this product is ideal for tracking asset and tool tracking in medical devices for healthcare, laptops & servers in IT (information technology), industrial manufacturing, oil & gas pipelines, liquid container tracking, high value/luxury retail items and many other industry verticals.

TYPICAL APPLICATIONS

- Mount on Metal Applications
- Logistics involving metal surfaces
- Logistics of Liquid containers
- IT and office assets tracking
- Hospital assets tracking applications
- Tools and kitchen assets tracking



PHYSICAL SPECIFICATION	
Face Stock	Printable white PET resin ribbon is recommended
Label Sizes	60 x 24 x 1.2 mm 2.36 x 0.94 x 0.047 in
Adhesive	High performance permanent adhesive
Weight	0.6 g
Delivery format	Roll form
No. of Labels/ Reel	500 pcs
Label Pitch	35.00 mm / 1.38 in
Core Inner Diameter	76 mm / 3 in
Roll Outer Diameter	180 mm / 7.1 in



RF SPECIFICATION

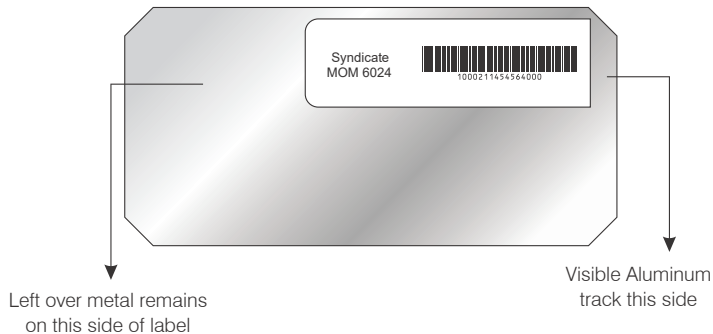
Mode of Operation	Passive
Device type	Class 1 Gen 2 Passive UHF RFID transponder
Air interface protocol	EPC Global Class 1 Gen 2 ISO 18000-6C
Operational frequency	ETSI : 865-868 MHz FCC : 902-928 MHz
IC type*	ETSI : NXP UCODE 8 FCC : NXP UCODE 7
Memory configuration	Upto 128 bits
Write cycle endurance	100,000
Read range (2W ERP)**	ETSI : On Metal 4 m, On Plastic 2.2 m, On Wood 2.1 m FCC : On Metal 4.5 m, On Plastic 2.5 m, On Wood 2.5 m
Applicable surface materials	Metallic surfaces and liquid containers

ENVIRONMENTAL RESISTANCE

Operating Temperature	-20°C to +70°C / -4°F to +158°F
Ideal Storage Condition	+23°C / 50% RH
Expected Lifetime	Years in normal operating conditions

PRODUCT INSTALLATION

Attach label in close proximity to edge of metal surface for optimum read range performance, as shown in image below.



- Ensure the application surface is not uneven and is clean and dry, to obtain maximum bond strength. If required, use approved cleaning solvents to clean surface.
- Avoid touching the backside of the label while mounting it

PERSONALIZATION OPTIONS

Pre-encoding

- Customer specific encoding of EPC

Customized Printing

- Customer specific layout including logo, text, numbers, barcodes etc.

ORDER INFORMATION

Part Number

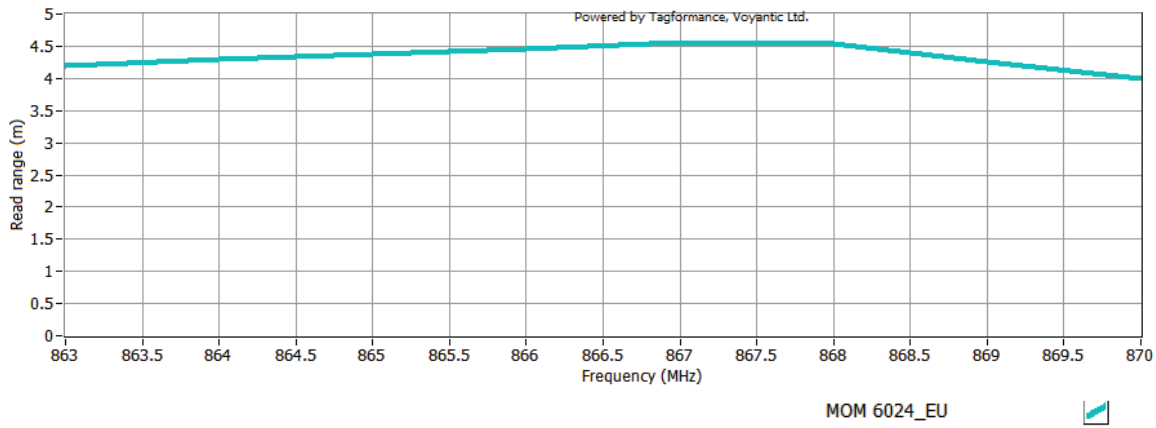
- RF.LI.TT.MOM.6024.ETSI
- RF.LI.TT.MOM.6024.FCC

Roll Sizes

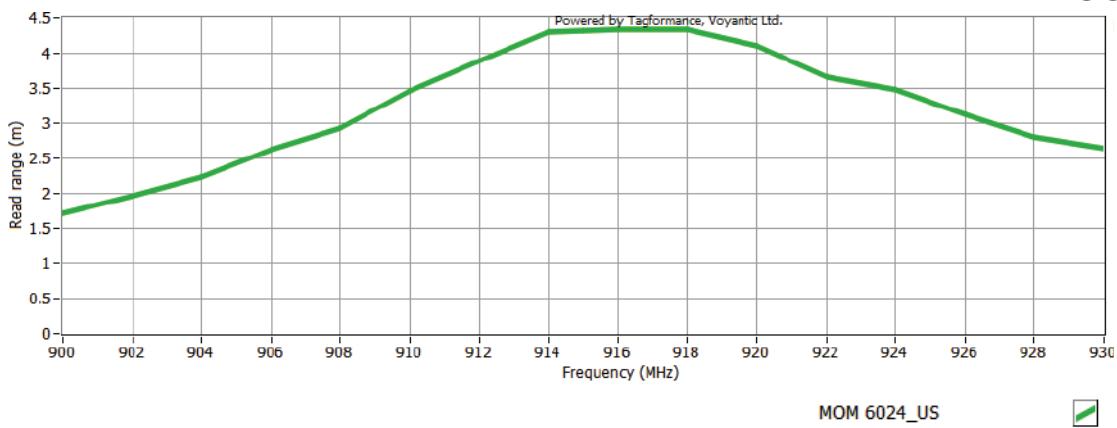
- 500 Labels per Roll / 4 Rolls per Carton

READ RANGE GRAPH (ETSI & FCC)

ETSI



FCC



* Other IC's available on request

** The indicated read range values are measured in our laboratory testing environment, where antennas with optimum directivity are used with maximum allowed operating power. Different surface materials and environments may exhibit different results.



Version : 100119.01