

# ARETE POP

Smart RFID Dongle Reader



- **Wide-compatibility**

- Compatible with most Apple iOS and Google Android devices (above iOS 6.0 and Android 2.3.3)

- **Plug and Play**

- Plug into your device's headphone jack and play your application

- **Small but Powerful**

- Pocket-size but shows about 1m read distance
- RFID Function: Read, Write, Lock and Kill

- **Free SDK and API**

- Free SDK and API are available for your own application

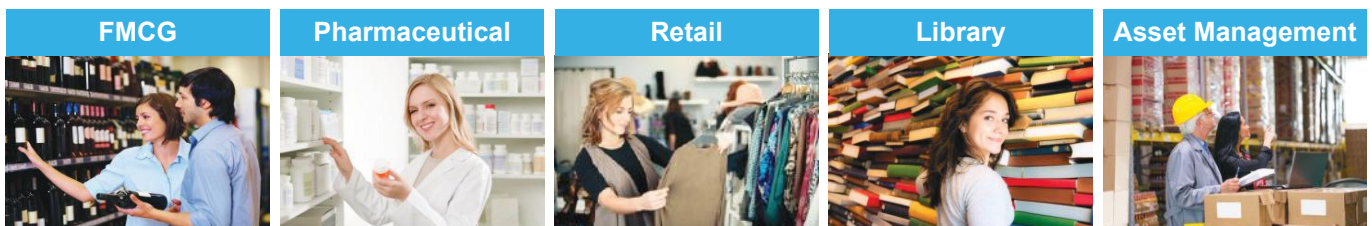
- **App Development Service**

- **Free Label Service**

- **RFID EPC Gen2 compliant**

- Compatible with EPCglobal Class 1 Gen 2 / ISO 18000-63(6C)

## APPLICATIONS



The best RFID reader is your phone

**ARETE**  
mobile

# Smart RFID Dongle Reader ARETE POP

## SPECIFICATIONS

PHYSICAL	
Dimension (W x L x H)	51 x 50 x 15 mm (without plug), 51 x 67.5 x 15 mm (with plug)
Weight	35g
Indication	Power on LED(Blue), Charging LED(Red), Tagging LED(Blinking Blue)
Battery	360mAh
Continuous Time	About 2.0 hours
Standby Time	About 17 hours
Charging	Micro USB 5pin
Color	White

RFID PERFORMANCE	
RFID Reader Chip	PHYCHIPS PR9200
Air Protocol	EPCglobal Class 1 Gen 2 / ISO 18000-63(6C)
Interface	3.5mm TRRS(4-pole) CTIA Plug for Smart Phone Headset Jack
Part No. & Operating Frequency	A100-K: 917.3 ~ 920.3 MHz (Korea Band) A100-U: 917.1 ~ 926.9 MHz (US Band) A100-E: 865.7 ~ 867.5 MHz (EU Band) A100-J: 920.6 ~ 922.2 MHz (Japan Band) A100-A: 920.7 ~ 924.3 MHz (Australia, Singapore Band)
OS	Apple iOS 6.0, Android 2.3.3 above
Output Power	316mW(25dBm) 200mW(23dBm) for Japan Band
RFID Read Distance	Up to 1.0m (depend on tags)
Antenna	Circularly Polarized Antenna
RFID Function	Read, Write, Lock, Kill

USER ENVIRONMENT	
Operating Temp	0~40 °C
Storage Temp	-20~60 °C

REGULATORY	
RFID	FCC Part 15 Subpart C 247, EN 302 208, KCC 2013-1, KCC 2012-102, ARIB STD-T107
EMI/EM	EN 301 409-1, EN 301 409-3, EN61000-3-2, EN61000-3-3, KN 301 409-1/3, KN61000-4-2/3/4/5/6/11
RF Exposure	FCC OET Bulletin 6 supplement C, IEEE 1528, IEC 62209, IEC62209-2, RSS-102, EN 62311, KCC 2012-1/2, RRA 2012-7/13/43
Electrical	EN 60950-1

## ACCESSORIES



Holder

USB Cable

User Guide

Product Box

\* Accessories above come with product

**PHYCHIPS**

Sales & Technical Supports

PHYCHIPS Inc. #104, 187 Techno 2-ro, Yuseong-gu, Daejeon, Korea

(Yongsan-dong, Migun Technoworld 2), 305-500

Tel : +82-42-864-2402 Fax : +82-42-864-2403

Web site : www.arete-mobile.com E-mail : sales@phychips.com

© Copyright 2014 by PHYCHIPS Inc. All right reserved. [Ver. 2014\_1.5]